

State of Wyoming Corner Record

(In compliance with the *CORNER PERPETUATION AND FILING ACT*, Wyoming Statutes, 1997, Section 33-29-140, et seq., and the Rules and Regulations of the Board of Registration for Professional Engineers and Professional Land Surveyors)

Reverse side of this form may be used if more space is needed.

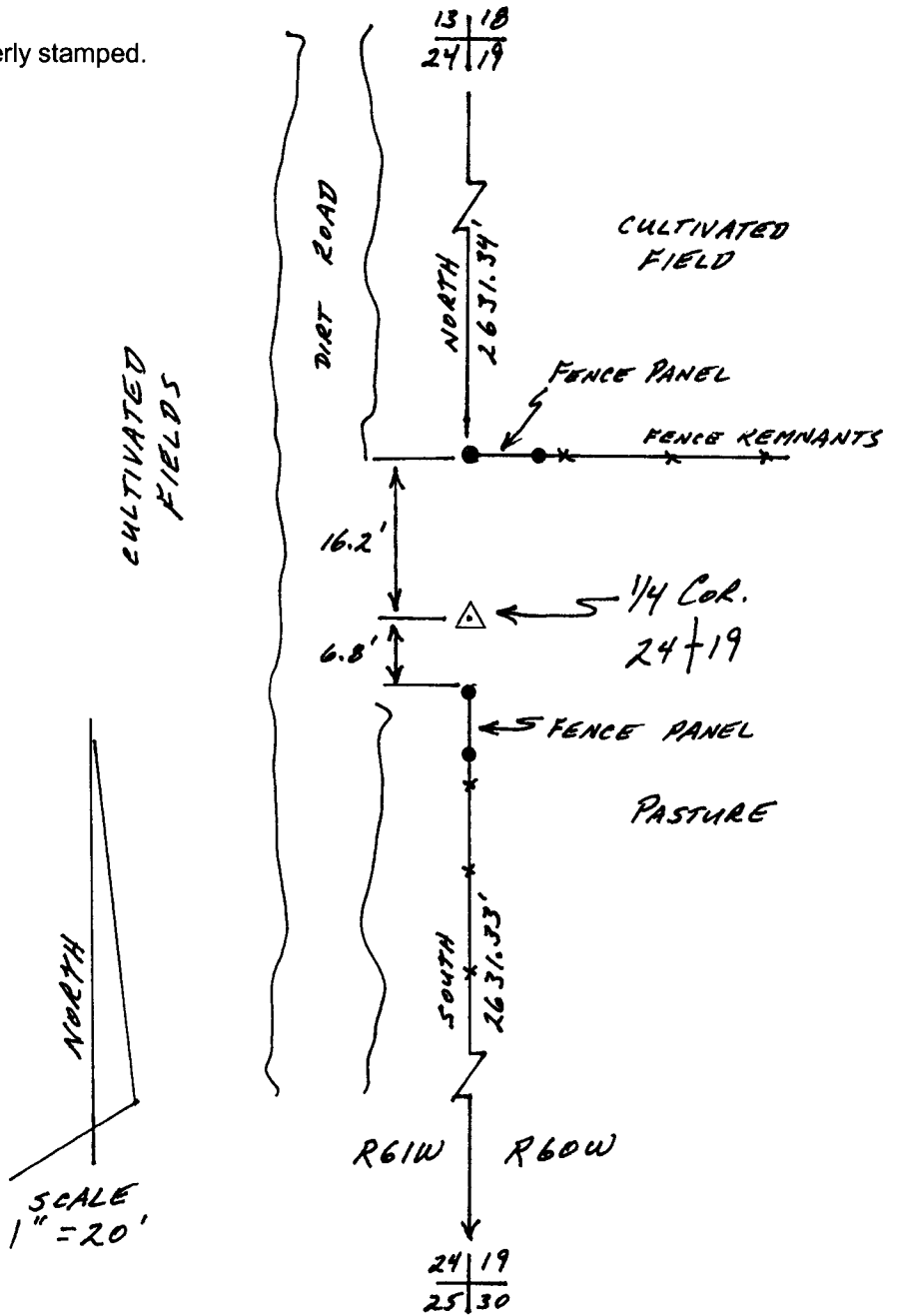
Record of original survey and citation of source of historical information (if corner is lost or obliterated). Description of corner monumentation evidence found and/or monument and accessories established to perpetuate the location of this corner. Sketch of relative location of monument, accessories, and reference points with course and distance to adjacent corner(s) (if determined in this survey). Method and rationale for reestablishment of lost or obliterated corner.

West Quarter Corner: Section 19, T14N, R60W, 6th PM, Laramie County, Wyoming

GLO record: 14"x9"x6" granite boulder

Found: No evidence of original monument.

Set: 30" No.5 rebar w/2 1/2" dia. Al. Surv Cap properly stamped.



Date of Field Work: 30 June 2007

Office Reference: _____

CROSS INDEX DIAGRAM

1	2	3	4	5	6	7	8	9	10	11	12	13	14	15	16	17	18	19	20	21	22	23	24	25	
A																									A
B																									B
C	6			5				4					3					2						1	C
D																									D
E																									E
F																									F
G	7			8				9					10					11						12	G
H																									H
J																									J
K																									K
L	18			17				16					15					14						13	L
M																									M
N																									N
O																									O
P	19			20				21					22					23						24	P
Q																									Q
R																									R
S																									S
T	30			29				28					27					26						25	T
U																									U
V																									V
W																									W
X	31			32				33					34					35						36	X
Y																									Y
Z																									Z

Land Surveyor / Firm / Address

Studley Land Surveying, PC

John J. Studley, PLS No. 4828

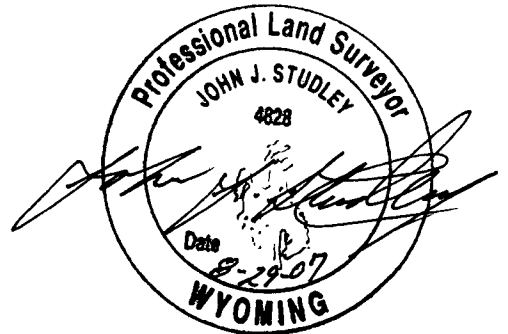
5805 E. 13th St.

Chevenne, WY 82001

Telephone: 307-287-4755

This corner record was prepared by me or under my direction and supervision.

SEAL & SIGNATURE



Corner Name: West Quarter Corner Sections: 19 T 14 N R 60 W ; 6th P.M. Cross-Index No.: P-1
 SBRPEPLS/PLSW: March 1994; PLSW January 1998

